

Sec 21-78-4 5A

3033-83
3-3-1983
DECLARATION

TECH PROFESSIONAL CENTRE CONDO

BETT
C

2ND AMENDMENT

UNIT 1 Lundy Corporation 45934-2002

2A GC STEVENSON 11-13-2002

2B Gilarski Charles & Kerry (Jr) 10-19-88

(2002) 2C WEST Hagen, Vernon & Marilyn (Conseutor) 4-1-2004
10800-04
10801-04

20
(2002)

2C EAST JAMES L & DEBORAH EGGER 27405-2001
8-14-2001

3A PAUL CRAIG Paul R. Jr & Craig Paul each 1/2 1-4-07
10319-2006

3B FRED W & SHAWN D BELK 4-6-2006

3C Javis (Robert & Cheryl) 4-5-88
04857-88

3D¹ VanderBerg, Ronald W. 18518-2001
6-18-2001

D²

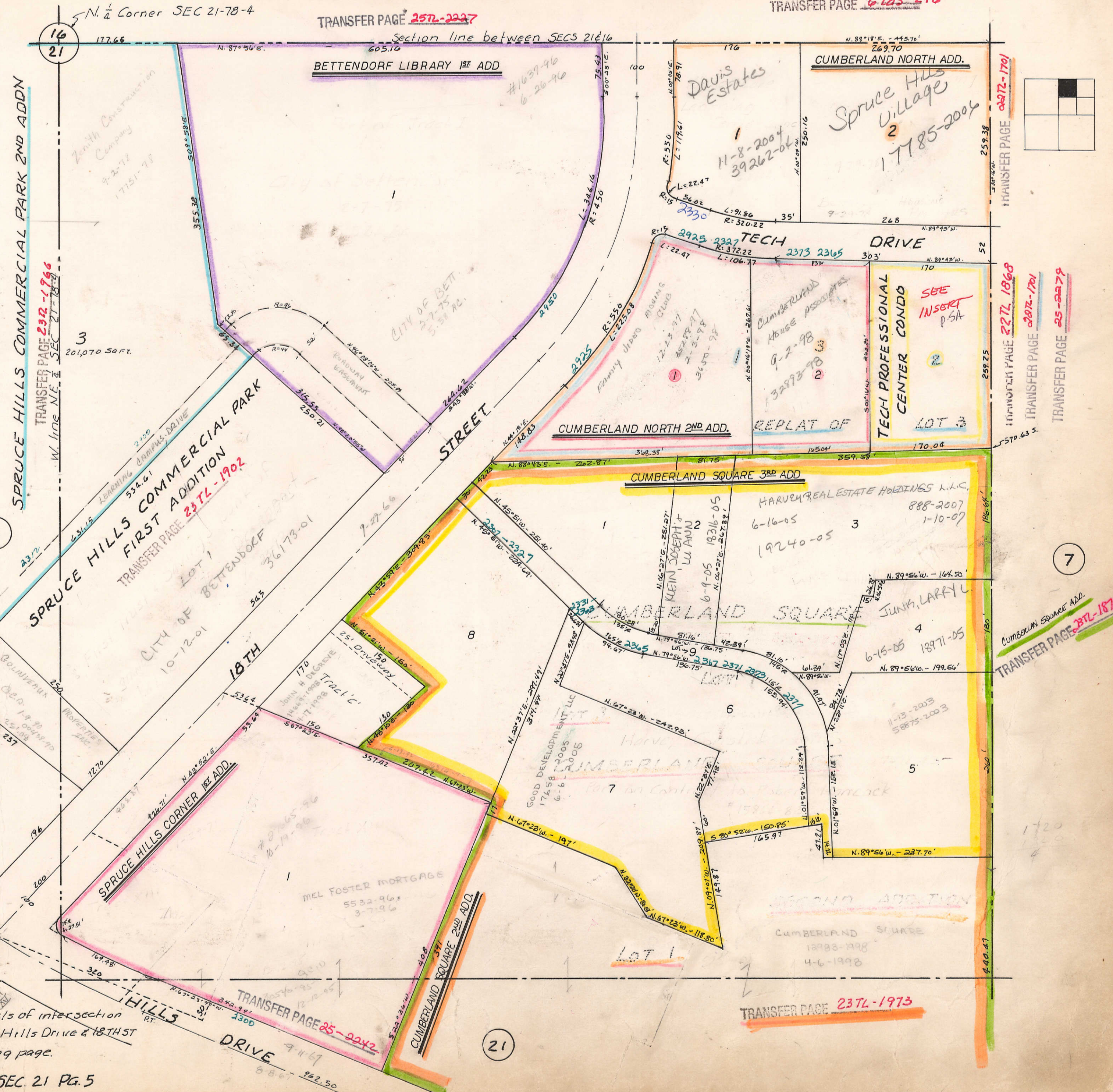
1ST AMENDMENT (1472-827 8-15-83) (2A, 2B, 2C, 3A, 3B, 3C, 3D)

2ND AMENDMENT (# 24331-2001 6-24-2001) (2C WEST, 2C EAST)

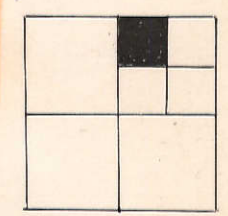
3RD AMENDMENT # 23272-87 12 (3D¹, 3D²)

TRANSFER PAGE 22-TL-1868
(copy of all amendments)

TRANSFER PAGE 61ds-216



For details of intersection
of Spruce Hills Drive & 18TH ST
See facing page.



TRANSFER PAGE 257L-1701
TRANSFER PAGE 237L-1968
TRANSFER PAGE 237L-1701
TRANSFER PAGE 25-2279

CUMBERLAND SQUARE ADD.
TRANSFER PAGE 237L-1874

TRANSFER PAGE 237L-1973